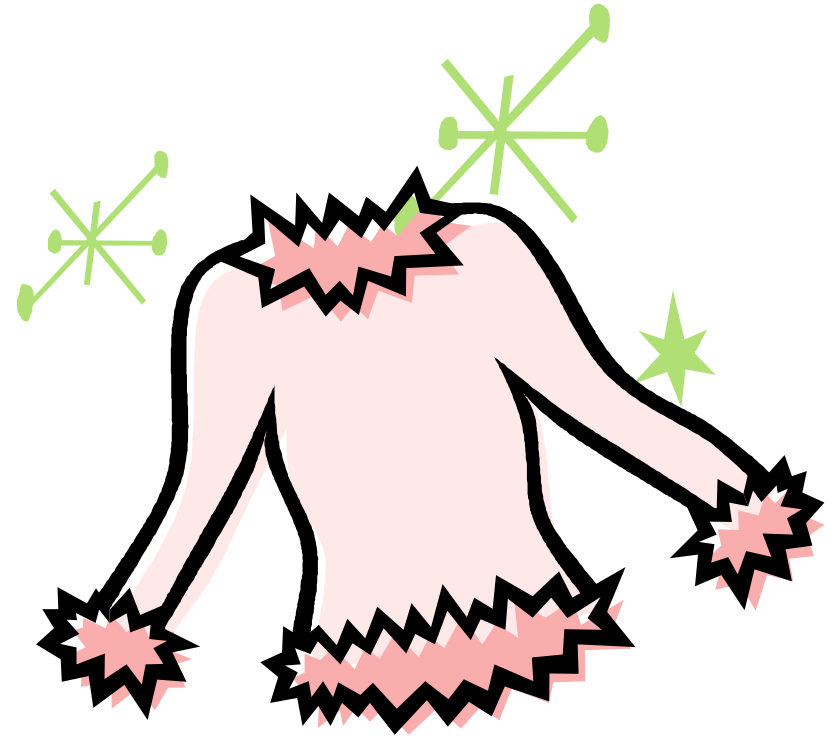




Hemd



Pullover



Hose



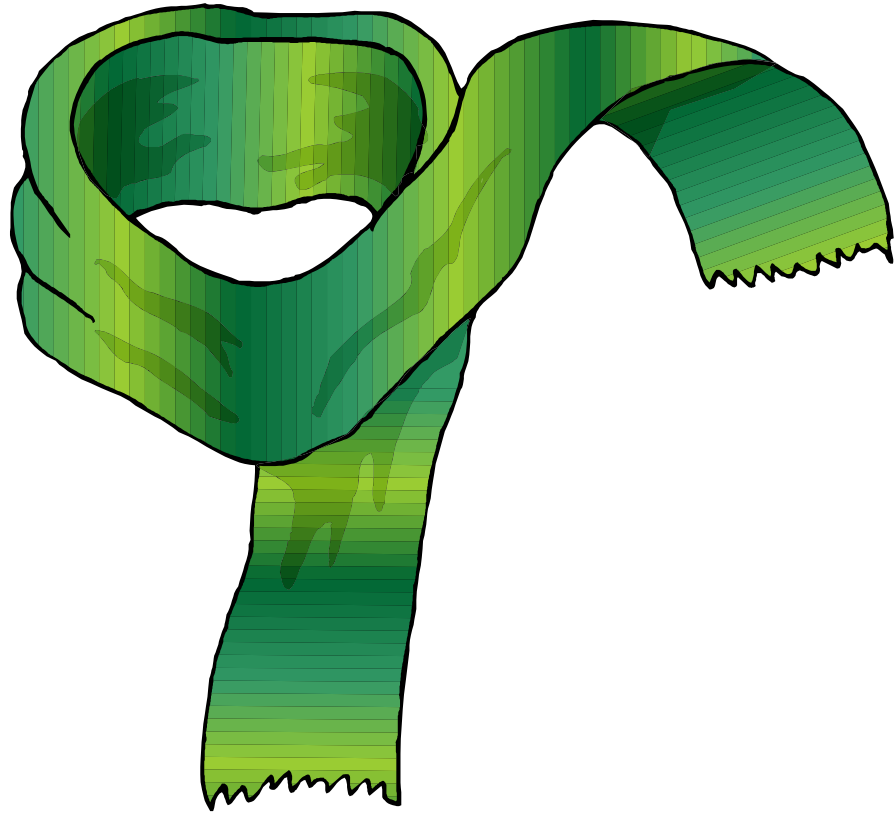
Kleid



T-Shirt



Haube



Schal



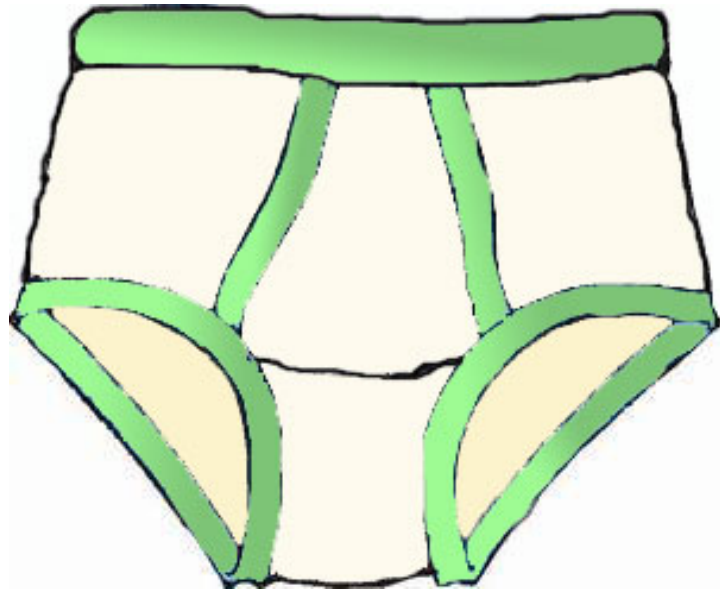
Jacke



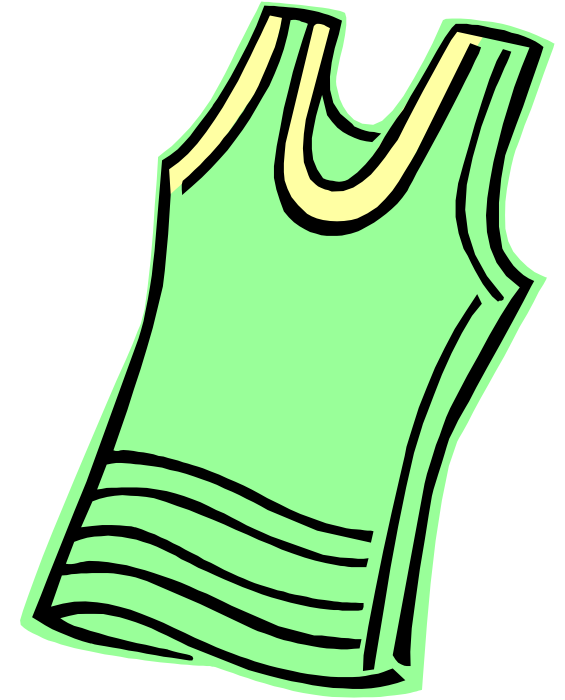
Mantel



Schuhe



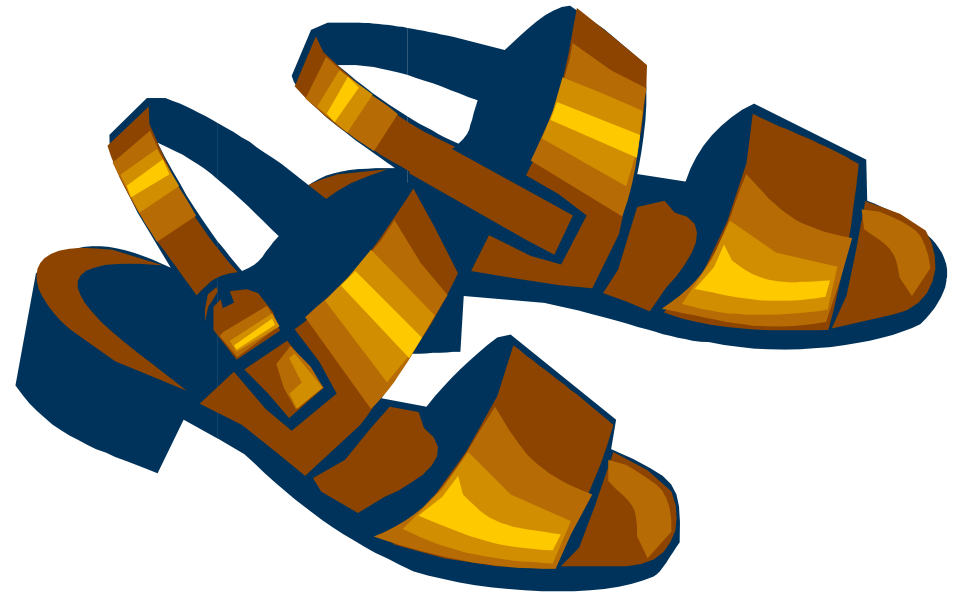
Unterhose



Unterhemd



Stiefel



Sandalen

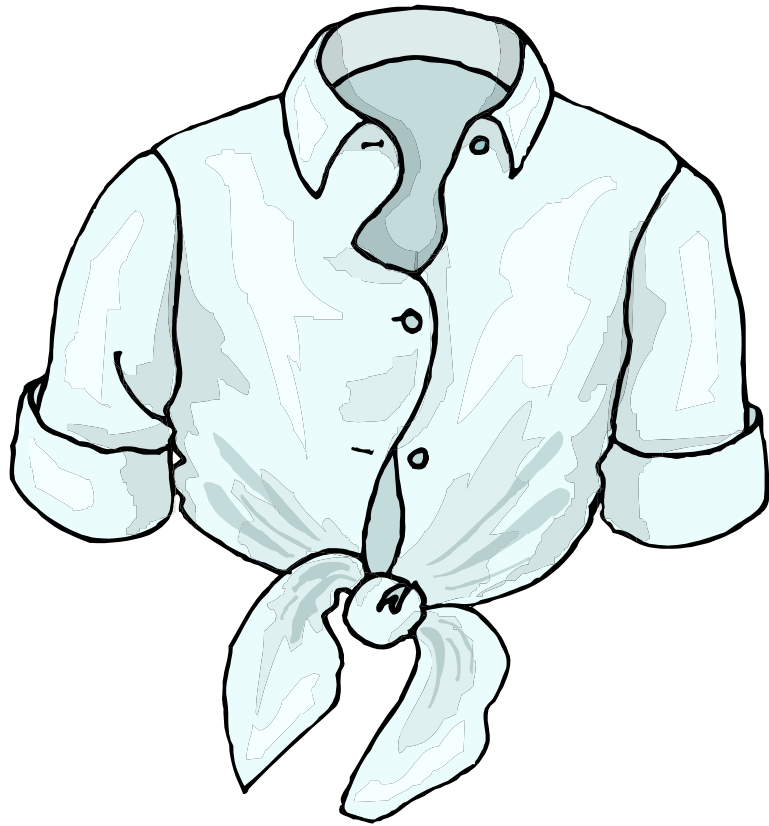


Badeanzug



Socken





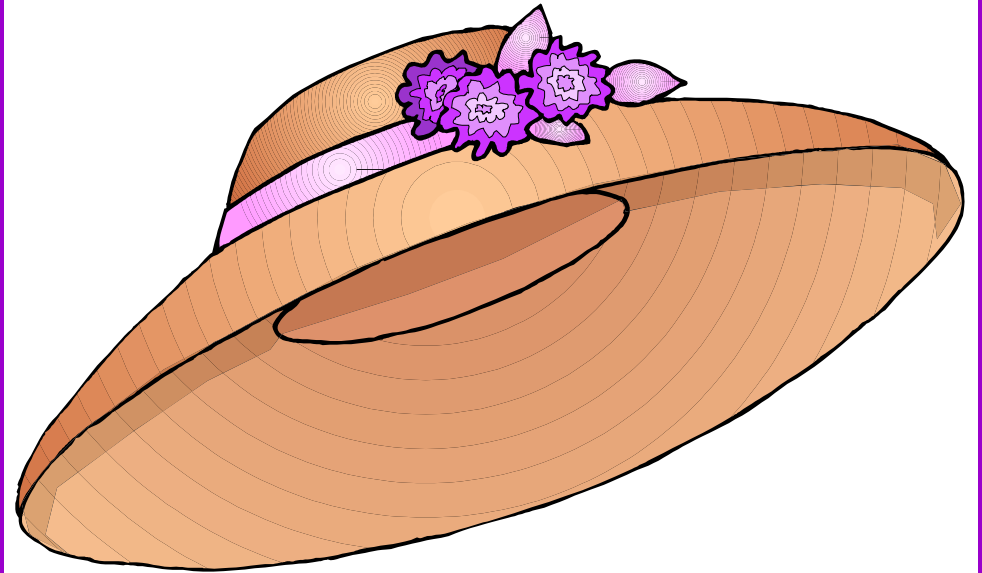
Bluse



Handschuhe



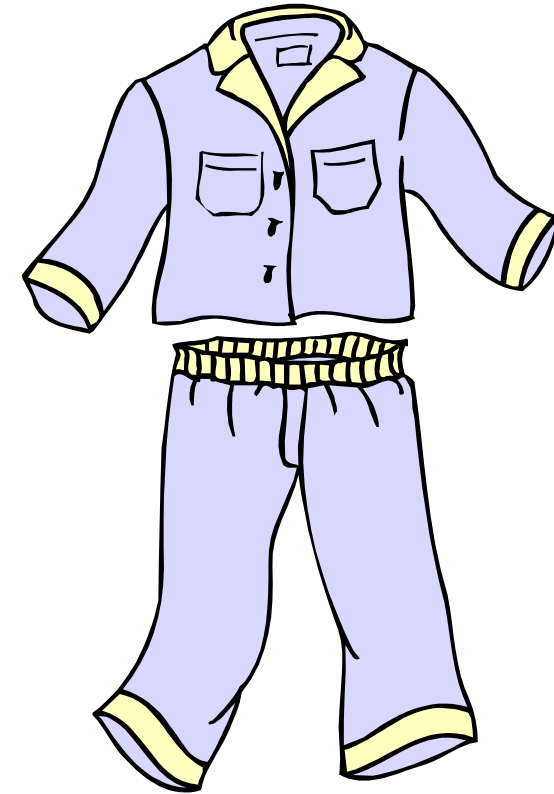
Kappe



Sonnenhut



kurze Hose



Pyjama



Strumpfhose



Weste

Anleitung:

Bildkarten drucken, laminieren und zerschneiden.

Rückseite mit Magnetklebeband bestücken.

FERTIG

ODER: Auch einfach nur als Puzzle verwendbar