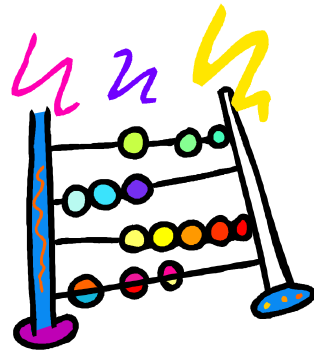


Wir erforschen den Zahlenraum



1

Wie heißen die Zahlen?



Trage richtig ein:

___ H ___ Z ___ E

___ H ___ Z ___ E

2

Wie heißen die Zahlen?



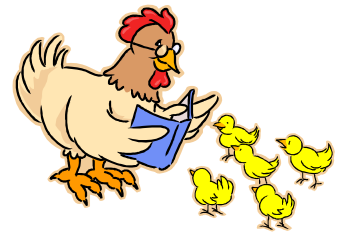
Trage richtig ein:

___ H ___ Z ___ E

___ H ___ Z ___ E

3

Zahlen zeichnen



Zeichne folgende Zahlenbilder
mit Hunderterplatten, Zehnerstangen und Einerpunkten:

259

437

198

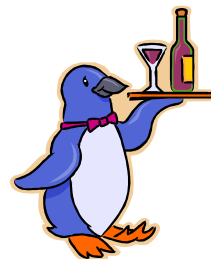
373

Schreibe dann so: $687 = 600 + 80 + 7$

4

Schreibe die Hunderternachbarn auf:

_____ 600 _____
_____ 300 _____
_____ 500 _____
_____ 800 _____
_____ 200 _____
_____ 900 _____
_____ 400 _____
_____ 700 _____



5

Schreibe die Hunderternachbarn auf:

_____ 370 _____
_____ 620 _____
_____ 250 _____
_____ 930 _____
_____ 490 _____
_____ 810 _____
_____ 580 _____
_____ 740 _____



6

Zähle in Hunderterschritten:



200 _____

_____ 600 _____

_____ _____ 1000

_____ 400 _____

7

Wir rechnen mit Hunderterzahlen:

$500 + 200 = \underline{\hspace{2cm}}$

$900 - 400 = \underline{\hspace{2cm}}$

$300 + 600 = \underline{\hspace{2cm}}$

$600 - 500 = \underline{\hspace{2cm}}$

$400 + 100 = \underline{\hspace{2cm}}$

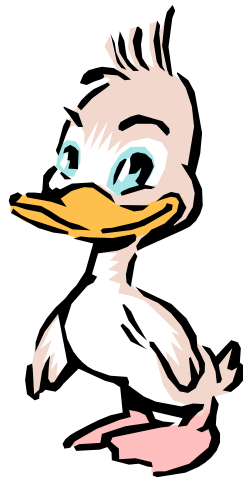
$800 - 200 = \underline{\hspace{2cm}}$

$200 + 600 = \underline{\hspace{2cm}}$

$700 - 300 = \underline{\hspace{2cm}}$

$300 + 300 = \underline{\hspace{2cm}}$

$1000 - 200 = \underline{\hspace{2cm}}$



8

Wir rechnen mit Hunderterzahlen:

$500 \cdot 2 = \underline{\quad}$

$800 : 2 = \underline{\quad}$

$300 \cdot 2 = \underline{\quad}$

$600 : 2 = \underline{\quad}$

$100 \cdot 2 = \underline{\quad}$

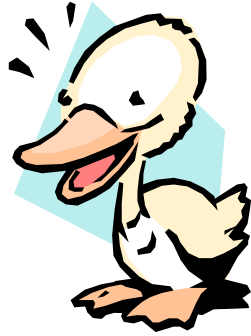
$400 : 2 = \underline{\quad}$

$400 \cdot 2 = \underline{\quad}$

$1000 : 2 = \underline{\quad}$

$200 \cdot 2 = \underline{\quad}$

$200 : 2 = \underline{\quad}$



9

Wir rechnen mit Hunderterzahlen:

$500 + \underline{\quad} = 800$

$600 - \underline{\quad} = 300$

$300 + \underline{\quad} = 900$

$400 - \underline{\quad} = 100$

$100 + \underline{\quad} = 700$

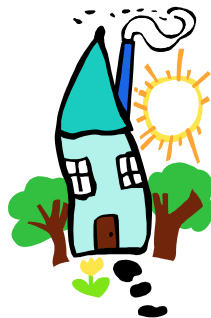
$800 - \underline{\quad} = 500$

$700 + \underline{\quad} = 1000$

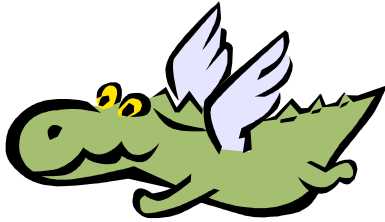
$200 - \underline{\quad} = 0$

$0 + \underline{\quad} = 600$

$1000 - \underline{\quad} = 200$

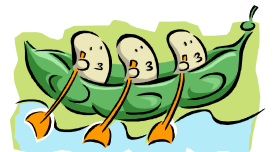


Schreibe die Zehnernachbarn auf:



_____ 390 _____
 _____ 620 _____
 _____ 240 _____
 _____ 930 _____
 _____ 470 _____
 _____ 880 _____
 _____ 510 _____
 _____ 750 _____

Wir zählen in Zehnerschritten:



350 _____
 _____ 630
 _____ 960 _____
 _____ 420 _____
 _____ 810 _____

Wir rechnen!

$540 + 200 = \underline{\hspace{2cm}}$

$480 + 400 = \underline{\hspace{2cm}}$

$360 + 600 = \underline{\hspace{2cm}}$

$120 + 800 = \underline{\hspace{2cm}}$

$690 + 200 = \underline{\hspace{2cm}}$

$450 + 400 = \underline{\hspace{2cm}}$

$220 + 700 = \underline{\hspace{2cm}}$

$750 + 100 = \underline{\hspace{2cm}}$

$390 + 400 = \underline{\hspace{2cm}}$

$250 + 300 = \underline{\hspace{2cm}}$



Wir rechnen!

$830 + 40 = \underline{\hspace{2cm}}$

$480 + 60 = \underline{\hspace{2cm}}$

$780 + 10 = \underline{\hspace{2cm}}$

$390 + 70 = \underline{\hspace{2cm}}$

$460 + 30 = \underline{\hspace{2cm}}$

$270 + 80 = \underline{\hspace{2cm}}$

$140 + 50 = \underline{\hspace{2cm}}$

$150 + 90 = \underline{\hspace{2cm}}$

$520 + 60 = \underline{\hspace{2cm}}$

$660 + 80 = \underline{\hspace{2cm}}$



14

Wir rechnen!



$630 + 260 = \underline{\hspace{2cm}}$

$130 + 790 = \underline{\hspace{2cm}}$

$580 + 410 = \underline{\hspace{2cm}}$

$650 + 280 = \underline{\hspace{2cm}}$

$440 + 350 = \underline{\hspace{2cm}}$

$470 + 370 = \underline{\hspace{2cm}}$

$170 + 820 = \underline{\hspace{2cm}}$

$290 + 450 = \underline{\hspace{2cm}}$

$250 + 330 = \underline{\hspace{2cm}}$

$560 + 380 = \underline{\hspace{2cm}}$

15

Wie heißen die Zehnernachbarn?

_____ 300 _____
_____ 500 _____
_____ 700 _____
_____ 200 _____
_____ 600 _____
_____ 900 _____
_____ 400 _____
_____ 100 _____
_____ 800 _____

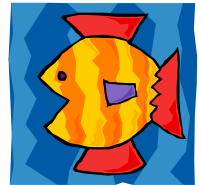


Wie heißen die Zehnernachbarn?

_____ 290 _____
 _____ 640 _____
 _____ 890 _____
 _____ 510 _____
 _____ 780 _____
 _____ 320 _____
 _____ 170 _____
 _____ 430 _____
 _____ 950 _____



Wir zählen in Zehnerschritten!



270 _____

660 _____

890 _____

_____ 300

_____ 720

Wir zählen in Zehnerschritten!

| | | | | | |
|-------|-------|-------|-------|-------|-------|
| _____ | _____ | _____ | 550 | _____ | _____ |
| _____ | _____ | 970 | _____ | _____ | _____ |
| _____ | 120 | _____ | _____ | _____ | _____ |
| _____ | _____ | 480 | _____ | _____ | _____ |
| _____ | _____ | _____ | 800 | _____ | _____ |

Wir rechnen!

$540 + 200 = \underline{\hspace{2cm}}$

$480 + 400 = \underline{\hspace{2cm}}$

$360 + 600 = \underline{\hspace{2cm}}$

$120 + 800 = \underline{\hspace{2cm}}$

$650 + 200 = \underline{\hspace{2cm}}$

$790 + 100 = \underline{\hspace{2cm}}$

$270 + 400 = \underline{\hspace{2cm}}$

$280 + 700 = \underline{\hspace{2cm}}$

$180 + 800 = \underline{\hspace{2cm}}$

$510 + 400 = \underline{\hspace{2cm}}$



Wir rechnen!

$830 + 40 = \underline{\quad}$

$480 + 60 = \underline{\quad}$

$780 + 10 = \underline{\quad}$

$390 + 70 = \underline{\quad}$

$460 + 30 = \underline{\quad}$

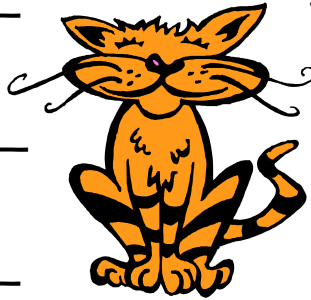
$270 + 80 = \underline{\quad}$

$140 + 50 = \underline{\quad}$

$150 + 90 = \underline{\quad}$

$620 + 40 = \underline{\quad}$

$560 + 60 = \underline{\quad}$



Wir rechnen!

$630 + 260 = \underline{\quad}$

$130 + 790 = \underline{\quad}$

$580 + 410 = \underline{\quad}$

$650 + 280 = \underline{\quad}$

$440 + 350 = \underline{\quad}$

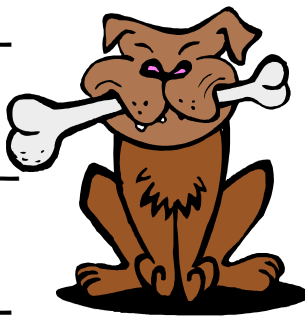
$470 + 370 = \underline{\quad}$

$170 + 820 = \underline{\quad}$

$290 + 450 = \underline{\quad}$

$320 + 610 = \underline{\quad}$

$580 + 260 = \underline{\quad}$



Wir rechnen!

$540 - 100 = \underline{\hspace{2cm}}$

$680 - 200 = \underline{\hspace{2cm}}$

$760 - 300 = \underline{\hspace{2cm}}$

$920 - 900 = \underline{\hspace{2cm}}$

$280 - 100 = \underline{\hspace{2cm}}$

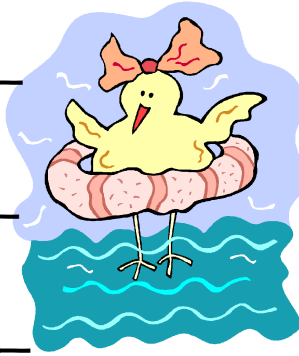
$430 - 300 = \underline{\hspace{2cm}}$

$870 - 400 = \underline{\hspace{2cm}}$

$120 - 100 = \underline{\hspace{2cm}}$

$330 - 200 = \underline{\hspace{2cm}}$

$720 - 500 = \underline{\hspace{2cm}}$



Wir rechnen!

$870 - 60 = \underline{\hspace{2cm}}$

$250 - 60 = \underline{\hspace{2cm}}$

$780 - 20 = \underline{\hspace{2cm}}$

$540 - 70 = \underline{\hspace{2cm}}$

$560 - 50 = \underline{\hspace{2cm}}$

$330 - 50 = \underline{\hspace{2cm}}$

$490 - 30 = \underline{\hspace{2cm}}$

$420 - 80 = \underline{\hspace{2cm}}$

$650 - 40 = \underline{\hspace{2cm}}$

$610 - 30 = \underline{\hspace{2cm}}$



Wir rechnen!

$970 - 560 = \underline{\quad}$

$540 - 260 = \underline{\quad}$

$860 - 420 = \underline{\quad}$

$650 - 370 = \underline{\quad}$

$790 - 350 = \underline{\quad}$

$760 - 480 = \underline{\quad}$

$680 - 210 = \underline{\quad}$

$320 - 190 = \underline{\quad}$

$890 - 230 = \underline{\quad}$

$930 - 550 = \underline{\quad}$



Wir rechnen!

$1000 - 510 = \underline{\quad}$

$840 + \underline{\quad} = 1000$

$1000 - 330 = \underline{\quad}$

$290 + \underline{\quad} = 1000$

$1000 - 750 = \underline{\quad}$

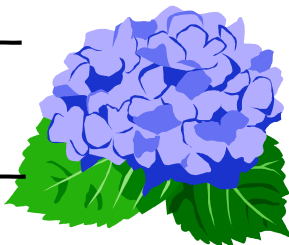
$170 + \underline{\quad} = 1000$

$1000 - 990 = \underline{\quad}$

$980 + \underline{\quad} = 1000$

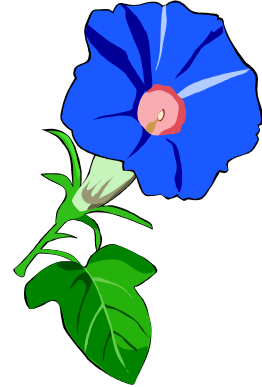
$1000 - 640 = \underline{\quad}$

$350 + \underline{\quad} = 1000$



Wie heißen die Einernachbarn?

_____ 147 _____
 _____ 582 _____
 _____ 924 _____
 _____ 345 _____
 _____ 290 _____
 _____ 381 _____
 _____ 472 _____
 _____ 563 _____
 _____ 100 _____
 _____ 999 _____



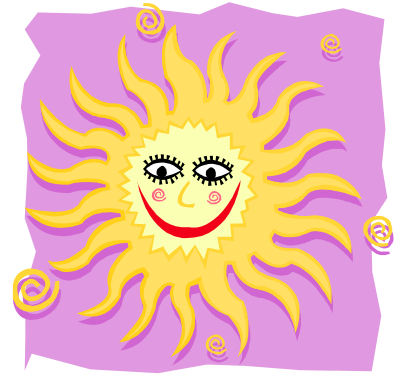
Wie heißen die Zehnernachbarn?

_____ 575 _____
 _____ 424 _____
 _____ 643 _____
 _____ 781 _____
 _____ 466 _____
 _____ 957 _____
 _____ 848 _____
 _____ 605 _____
 _____ 491 _____
 _____ 222 _____



Wie heißen die Hunderternachbarn?

_____ 375 _____
 _____ 466 _____
 _____ 957 _____
 _____ 848 _____
 _____ 511 _____
 _____ 726 _____
 _____ 666 _____
 _____ 901 _____
 _____ 286 _____
 _____ 209 _____



Wir zählen in Einerschritten!



826 _____

389 _____

_____ 653

_____ 740 _____

_____ 472 _____

Wir vergleichen: > oder < ?

540 _____ 560

880 _____ 870

910 _____ 990

660 _____ 690

848 _____ 884

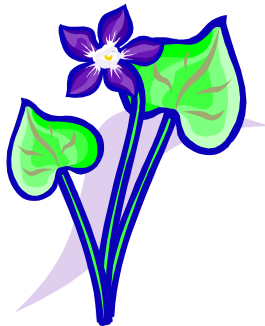
391 _____ 361

599 _____ 799

986 _____ 980

141 _____ 414

239 _____ 329

Wir ordnen! Beginne mit der kleinsten Zahl!

641 941 441 841 241 741 141

538 588 518 598 528 548 508

288 281 285 283 289 282 280

841 572 927 473 630 222 109

461 294 989 738 638 288 1000



Wir ordnen! Beginne mit der größten Zahl!



673 373 973 173 873 473 573

901 961 931 981 921 941 911

459 452 457 453 456 454 458

891 572 872 542 841 387 937

638 456 876 123 432 987 654

Wir zählen in Hunderterschritten!



426 526 _____

371 _____

191 _____

_____ 872

_____ 636

Wir zählen in Zehnerschritten!

225 235 _____

843 _____

_____ 492

_____ 923

_____ 567

Wir rechnen!

$$585 - 200 = \underline{\hspace{2cm}}$$

$$465 - \underline{\hspace{2cm}} = 165$$

$$637 - 400 = \underline{\hspace{2cm}}$$

$$272 - \underline{\hspace{2cm}} = 172$$

$$788 - 600 = \underline{\hspace{2cm}}$$

$$383 - \underline{\hspace{2cm}} = 183$$

$$919 - 800 = \underline{\hspace{2cm}}$$

$$794 - \underline{\hspace{2cm}} = 394$$

$$864 - 300 = \underline{\hspace{2cm}}$$

$$543 - \underline{\hspace{2cm}} = 243$$



Wir rechnen!

$529 + 70 = \underline{\quad}$

$459 + \underline{\quad} = 499$

$347 + 50 = \underline{\quad}$

$277 + \underline{\quad} = 297$

$888 + 10 = \underline{\quad}$

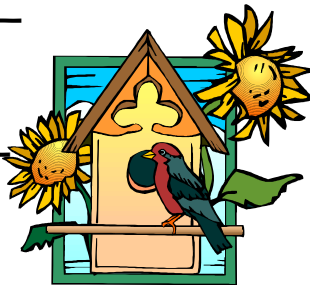
$345 + \underline{\quad} = 375$

$431 + 40 = \underline{\quad}$

$123 + \underline{\quad} = 183$

$626 + 50 = \underline{\quad}$

$749 + \underline{\quad} = 799$



Wir rechnen!

$989 - 70 = \underline{\quad}$

$859 - \underline{\quad} = 819$

$597 - 50 = \underline{\quad}$

$373 - \underline{\quad} = 303$

$284 - 10 = \underline{\quad}$

$642 - \underline{\quad} = 622$

$741 - 40 = \underline{\quad}$

$794 - \underline{\quad} = 734$

$368 - 60 = \underline{\quad}$

$999 - \underline{\quad} = 969$



Wir rechnen!

$524 + 4 = \underline{\quad}$

$859 + 4 = \underline{\quad}$

$343 + 5 = \underline{\quad}$

$738 + 5 = \underline{\quad}$

$888 + 1 = \underline{\quad}$

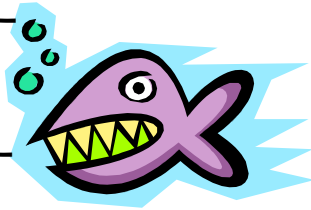
$567 + 7 = \underline{\quad}$

$431 + 7 = \underline{\quad}$

$446 + 8 = \underline{\quad}$

$765 + 4 = \underline{\quad}$

$678 + 8 = \underline{\quad}$



Wir rechnen!

$538 - 4 = \underline{\quad}$

$257 - 9 = \underline{\quad}$

$947 - 5 = \underline{\quad}$

$162 - 8 = \underline{\quad}$

$881 - 1 = \underline{\quad}$

$781 - 6 = \underline{\quad}$

$469 - 7 = \underline{\quad}$

$376 - 7 = \underline{\quad}$

$678 - 3 = \underline{\quad}$

$843 - 7 = \underline{\quad}$



Für Rechenprofis!

$412 + 17 = \underline{\hspace{2cm}}$

$759 - 48 = \underline{\hspace{2cm}}$

$254 + 15 = \underline{\hspace{2cm}}$

$247 - 16 = \underline{\hspace{2cm}}$

$641 + 28 = \underline{\hspace{2cm}}$

$868 - 27 = \underline{\hspace{2cm}}$

$133 + 26 = \underline{\hspace{2cm}}$

$376 - 25 = \underline{\hspace{2cm}}$

$821 + 63 = \underline{\hspace{2cm}}$

$543 - 28 = \underline{\hspace{2cm}}$



Für Rechenprofis!

$429 + 17 = \underline{\hspace{2cm}}$

$154 - 18 = \underline{\hspace{2cm}}$

$357 + 15 = \underline{\hspace{2cm}}$

$743 - 16 = \underline{\hspace{2cm}}$

$846 + 28 = \underline{\hspace{2cm}}$

$261 - 27 = \underline{\hspace{2cm}}$

$738 + 26 = \underline{\hspace{2cm}}$

$632 - 25 = \underline{\hspace{2cm}}$

$777 + 16 = \underline{\hspace{2cm}}$

$864 - 27 = \underline{\hspace{2cm}}$



So arbeitest du mit der Kartei:



- ◆ Du benötigst eine Karteikarte, dein Karteiheft und dein Federmäppchen!
- ◆ Schreibe die Nummer der Karte auf, dann lies dir alles gut durch!
- ◆ Schreibe die Übungen in dein Heft und lege die Karte wieder sorgfältig in den Karteikasten zurück!
- ◆ Arbeite genau und lass dir Zeit!
- ◆ Kontrolliere, ob du auch nichts vergessen hast!

Ein Nachsatz zur Kartei:

*Auf den ersten Seiten kann jeder individuell Zahlenstreifen,- plättchen usw. hinzufügen.
Viel Spaß beim Arbeiten mit dieser Kartei!*

Sandra Heigl